



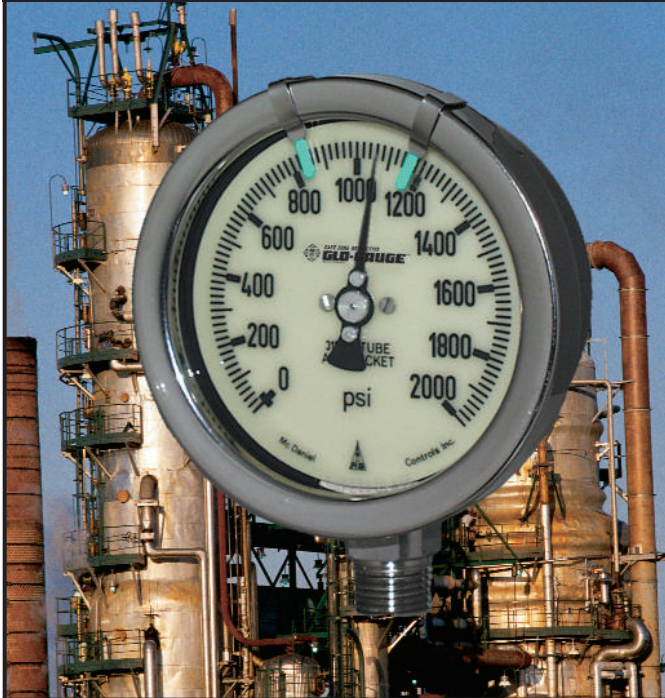
McDANIEL



SAFE ZONE REFLECTIVE

GLO-GAUGE™

PATENT PENDING



ALL STAINLESS STEEL SPECIFICATIONS

Dial:

Luminescent polycarbonate.
Ambient temperature rated to 200°F. Black Figures.
Size - 4" (100mm).

Model "E" = 4 inch (100mm) dial,
All SS, fillable case, 1/4" NPT

Model "G" = 4 inch (100mm) dial,
All SS, fillable case, 1/2" NPT

Model "F" = 6 inch (150mm) dial,
All SS, fillable case, 1/4" NPT

Model "H" = 6 inch (150mm) dial,
All SS, fillable case, 1/2" NPT

Pointer:

Aluminum alloy, black with high visibility silver retro-reflective.
Micrometer adjustable.

Lens Ring:

Polished 304 SS bayonet, oversized & removable.
Green retro-reflective
Min/Max tabs.

Lens:

Laminated safety glass (4 mm / .16" thick).

* (4" & 6" ALL SS VERSIONS: PLEASE ALLOW 4 TO 6 WEEK DELIVERY)

Accuracy:

0.5% full scale to ASME B40.1 standard (Grade 2A)

Bourdon Tube:

316 Stainless steel
(C Form 600 PSI & Below).
(Spiral 800 PSI & Above).

Case:

304 Stainless Steel

Movement

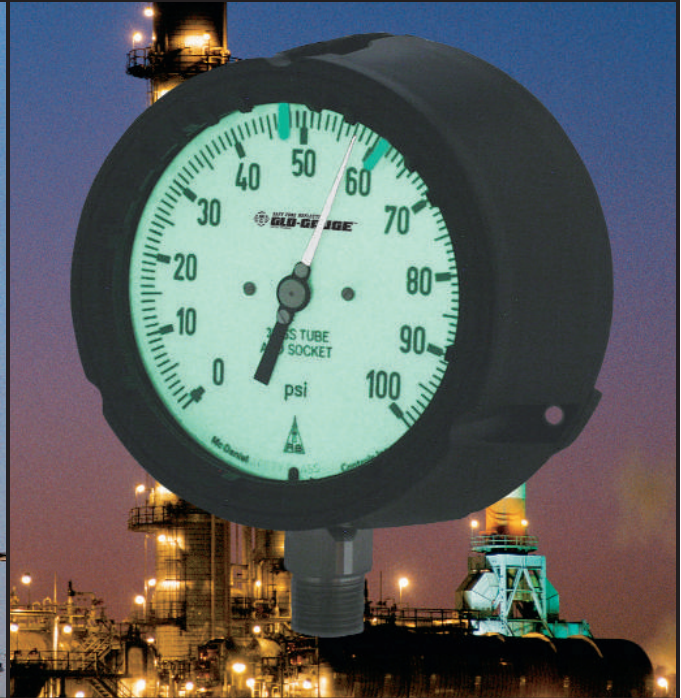
Precision stainless steel.
(mechanical over range stop)

Liquid Fillable:

Glycerin (GF), Silicone (SF)

Stem and Socket:

316 Stainless steel (4-sided wrench flats for easy wrench tightening)
Bottom connection (1/4", 1/2" NPT or Metric) High quality "rolled" threads (Helps to prevent galling).



PROCESS GAUGE SPECIFICATIONS

Dial:

Luminescent polycarbonate.
Ambient temperature rated to 200°F. Black Figures.
Size - 4.5 inches.

Model "MPB/SA" = 1/4" npt, bottom

Model "MPB/SC" = 1/2" npt, bottom

Pointer:

Aluminum alloy, black with high visibility silver retro-reflective.
Micrometer adjustable.

Lens Ring:

Molded fiberglass reinforced thermoplastic (PBTP).
303 SS insert with green retro-reflective Min/Max tabs.

Lens:

Laminated safety glass (4 mm / .16" thick).

Accuracy:

0.5% full scale to ASME B40.1 standard (Grade 2A)

Bourdon Tube:

316 Stainless steel
(C Form 600 PSI & Below).
(Spiral 800 PSI & Above).

Case:

Molded fiberglass reinforced thermoplastic (PBTP). (Fire retardant and impact resistant)
Case with integral rear flange.

Movement

Precision stainless steel.
(mechanical over range stop)

Liquid Fillable:

Glycerin (GF), Silicone (SF)

Blow-out Back:

Molded fiberglass reinforced thermoplastic (PBTP). Hinged for safety (will not become a projectile).

Compensating Diaphragm:

Unique *elastomer* with integral "O" ring seal. (Field ready for filling, hermetically sealed, weatherproof. No fill kit required.)

Stem and Socket:

316 Stainless steel (4-sided wrench flats for easy wrench tightening)
Bottom connection (1/4", 1/2" NPT or Metric) High quality "rolled" threads (Helps to prevent galling).

McDaniel Controls, Inc.

P. O. Box 187, Luling, LA 70070 • 14148 Highway 90, Boutte, LA 70039 U.S.A.
(985) 758-2782 • New Orleans (504) 467-1333 • Fax (985) 758-1688 • www.mcdanielcontrols.com

- SAFE ZONE FEATURES -

For Easy Viewing of the SAFE OPERATING ZONE – Day or Night!

The McDaniel *Safe Zone Reflective Glo-Gauge™* with easy-view operating range markers was designed to allow anyone viewing the pressure gauge the ability to easily determine and judge if operating conditions have become abnormal.

Anyone can easily customize each “safe operating zone” simply by setting tabs located outside the gauge lens face. These tabs are given green retro-reflective enhancements and allow many different types of operating pressure zones to be indicated. Minimum and maximum limits can be indicated and set apart at acceptable and safe operating pressures; or, all the way apart for more relaxed operating zones, depending upon each application – On the spot customization!

This remarkably easy solution permits anyone viewing the gauge, up close in the light of day; or far away in lowlight conditions, to easily see if the process is operating in the “*Safe Zone*” as set during gauge installation. (A valuable benefit for out-of-the-way gauges up on catwalks, pipelines, and in contaminated areas, etc.)

According to ASME B40.1 pressure gauge specifications 4.3.1: *“The pressure gauge selected should have a full scale pressure such that the operating pressure occurs in the middle half (25% to 75%) of the scale. The full scale pressure of the gauge selected should be approximately two times the intended operating pressure.”* ¹

The *Safe Zone Reflective Glo-Gauge™* is a visual guide that will assist operators in choosing and installing the proper pressure range per ASME B40.1 for the application due to tabs only in this “middle half of scale” (4.5” Process Gauge). This will help to reduce gauge wear and fatigue, and minimize hazardous situations because the correct pressure range is installed. Furthermore, by visually displaying the specific operating range specified for that application and alerting anyone viewing the gauge that the pressure is above or below normal, they can take immediate action to correct it. (T.P.M. “visual systems” compliance)

REFLECTIVE FEATURES

The pointer appears the standard black color and it has been given a retro-reflective enhancement which reflects silver when illuminated by a flashlight held at eye level. The green tabs also are retro-reflective. This allows anyone, from a great distance (up to 150+ feet!), to easily see and determine if the gauge pressure is in the safe operating zone specific for that process.

GLOW FEATURES

Additionally, with a charge from a flashlight, ambient light, or sunlight, the gauge dial will glow-in-the-dark for a short period of time to allow operators and technicians to monitor pressure readings while performing their maintenance tasks nearby.

Watertight, liquid-fillable, and trusted McDaniel heavy-duty construction with the added benefits of instantly knowing if you’re operating in the “*Safe Zone*” makes this gauge your first and “*lasting*” choice. Try one today!

*** DIMENSIONAL DATA AVAILABLE ON WEBSITE: www.mcdanielcontrols.com**

Range code	Range psi	Minor Increments
6	0 - 6	.1
10	0 - 10	.1
A	0 - 15	.25
B	0 - 30	.5
C	0 - 60	1
D	0 - 100	1
E	0 - 160	2
F	0 - 200	2
G	0 - 300	5
H	0 - 400	5
I	0 - 600	10
J	0 - 800	10
K	0 - 1000	10
L	0 - 1500	25
M	0 - 2000	20
N	0 - 3000	50
4k	0 - 4000	50
O	0 - 5000	50
6k	0 - 6000	100
P	0 - 10000	100
Q	0 - 15000	250
R	0 - 20000	200
VACUUM	VACUUM	VACUUM
S	VAC 30”Hg - 0	.5
RECEIVER	RECEIVER	RECEIVER
T	REC 3 - 15**	2
COMPOUND	COMPOUND	COMPOUND
U	30”Hg + 15	1-0-5
V	30”Hg + 30	1-0-5
W	30”Hg + 60	2-0-2
X	30”Hg + 100	5-0-2
Y	30”Hg + 160	5-0-5
Z	30”Hg + 300	10-0-5
2k	30”Hg + 200	10-0-5

** Receiver gauge is dual scale. (0 - 100% primary, 0 - 10 square root secondary).

HOW TO ORDER

- 1 - Select the model number (MPB/S = 4.5” Process Gauge), or (“E” model = 4”, All SS, 1/4”npt), or (“G” model = 4”, All SS, 1/2 npt), or (“F” model = 6”, All SS, 1/4”npt), or (“H” model = 6”, All SS, 1/2 npt)
- 2 - Specify connection code (for MPB/S Process Gauge only “A” = 1/4” NPT, “C” = 1/2” NPT)
- 3 - Specify range code from list at left.
- 4 - Specify mounting code
 (*Not applicable on model MPB/S, bottom mount only available)
- 5 - Specify special configurations or options.
 (Glow dial with reflective indicators - “G”)
- 6 - Add choice of filling, if appropriate. (GF = Glycerin Filled) (SF = Silicone Filled)

MOUNTING CODE	
L	= Lower Back
U	= Panel Mount, U-Clamp
P	= Panel Mount, Front Flange
R	= Rear Flange
No Code	= Bottom Connection

Examples:
1Model # → MPB/SAEG-GF 2Model # → GDG
 1“MPB/S” = Model. “A” = (1/4” NPT). “E” = (0-160 psi). “G” = Glow dial with reflective indicators. “GF” = (Glycerin Filled)
 2“GDG” = Model. “G” (4” Dial, 1/2” NPT, bottom connection). “D” = (0-100 psi). “G” = Glow dial with reflective indicators.

*** (4” & 6” ALL SS VERSIONS: PLEASE ALLOW 4 TO 6 WEEK DELIVERY)**

OPTIONS:

Liquid Filled - Monel® Internals - Plastic Lens - SS Tags
Higher pressures available upon request. - Calibration Certificate (N.I.S.T.)

Warranty

McDaniel warrants our pressure gauges to be free of defects in material and workmanship: Replacement of any defective gauge will be made at no cost to the purchaser. Gauge failures determined to be caused by abuse, over-range and incompatibility with environment or process media will not be considered under this warranty.

Repair

We will repair any McDaniel gauge for a cost of \$15.00 on 4” and larger sizes; \$7.50 on 2 1/2” and smaller. Damaged sockets or bourdon tubes cannot be repaired. Prices are F.O.B. Boutte, Louisiana. U.S.A.

DISTRIBUTED BY:

It is recommended that users of pressure gauges become familiar with American National Standard ASME B40.1, entitled Gauges, Pressure and Vacuum – Indicating Dial Type – Elastic Element. This specification is available from:
American Society of Mechanical Engineers,
United Engineering Center
 345 East 47th Street
 New York, New York 10077