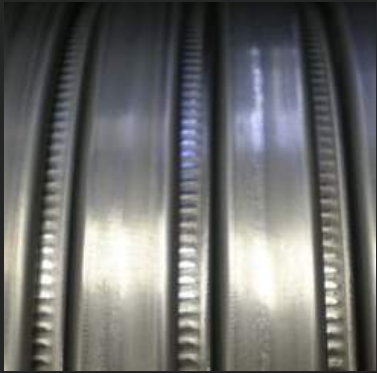


Product Focus

T-Rex™

TORQUE-RESISTANT Interlocked Metal Hose (Patented)

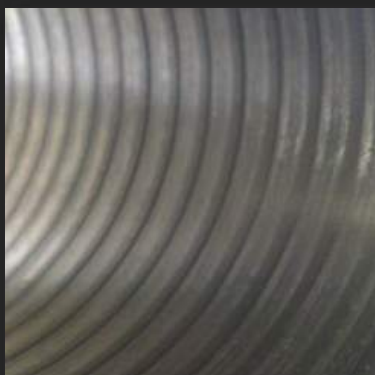
Hose Master designed T-Rex™, the first torque-resistant stripwound metal hose with enhanced sealability. Manufactured in either Roughbore (bi-directional/unlined) or Smoothbore (uni-directional/lined) constructions, T-Rex™ provides optimum resistance to twisting, unwinding, or metal strip flare up when cut.



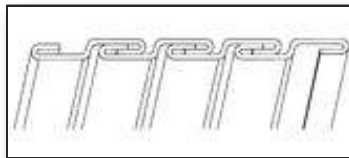
Exterior of T-Rex™ Construction



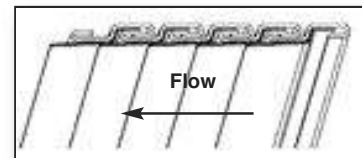
Interior of T-Rex™ Roughbore



Interior of T-Rex™ Smoothbore



Roughbore Construction



Smoothbore Construction

T-Rex™ Features

- Torque-Resistant
- Leak-Resistant
- Increased temperature ratings - up to 1500° for Stainless Steel and 850° for Galvanized Steel
- Same great flexibility as Hose Master's standard interlocked products
- Smooth transition weld of fittings maximizes flow and minimizes distortion of the media
- Superior abrasion resistance
- Swivel coupler facilitates installation and minimizes torquing
- Various packing styles are available upon request

T-Rex™ Specifications

- Available in 1-1/2" through 16" nominal inside diameters
- Galvanized or Stainless Steel alloys
- Various strip thicknesses
- Roughbore or Smoothbore constructions
- Bulk lengths or fabricated assemblies

T-Rex™ Applications

- Ideally suited for dry bulk pneumatic conveying
- Material handling
- Pellet transfer
- Bulk unloading



HOSE MASTER

1233 East 222nd Street • Cleveland, Ohio 44117
(800) 221-2319 • Fax: (216) 481-7557 • www.hosemaster.com
Cleveland • Houston • Atlanta

ISO 9001 : 2000
Registered Quality System



T-Rex™ Torque-Resistant Product Specifications

Explanation of T-Rex™ Roughbore Part Numbers

RX	Strip Thickness	Material Code
	15 - Light Weight	SS - Stainless Steel
	18 - Medium Weight	GS - Galvanized Steel

Explanation of T-Rex™ Smoothbore Part Numbers

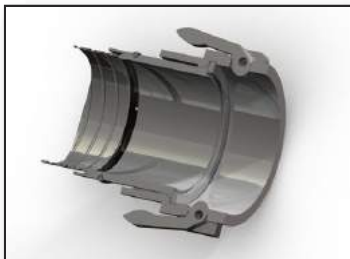
RX	Armor Material	Armor Strip	Liner Material
	S - Stainless Steel	15 - Light Weight	S - Stainless Steel
	G - Galvanized Steel	18 - Medium Weight	C - Carbon Steel
			4 - Magnetic Liner

Inside Dia. (in.)	T-Rex™ Roughbore Designs						T-Rex™ Smoothbore Designs			
	RX15 (SS or GS) <i>(Interflex Unlined Bi-Directional Series)</i>		RX18 (SS or GS) <i>(Interflex Unlined Bi-Directional Series)</i>		RX25 (SS or GS) <i>(Interflex Unlined Bi-Directional Series)</i>		RX (S or G) 15 (S,C or 4) <i>(Ultraflex Lined Uni-Directional Series)</i>		RX (S or G) 18 (S,C or 4) <i>(Ultraflex Lined Uni-Directional Series)</i>	
	Weight per foot (lbs.)	Min. Bend Radius (in.)	Weight per foot (lbs.)	Min. Bend Radius (in.)	Weight per foot (lbs.)	Min. Bend Radius (in.)	Weight per foot (lbs.)	Min. Bend Radius (in.)	Weight per foot (lbs.)	Min. Bend Radius (in.)
1 1/2	0.7	6	0.9	6						
2	1.0	8	1.1	8						
2 1/2	1.2	10	1.4	10						
3	1.4	12	1.6	12	2.5	13				
3 1/2	1.6	14	1.9	14	2.8	15				
4	1.8	16	2.2	16	3.2	17	3.0	17	3.4	18
4 1/2	2.0	17	2.4	17	3.6	19	3.4	19	3.8	21
5	2.2	19	2.7	19	4.0	21	3.7	21	4.2	23
6	2.7	23	3.2	23	4.7	25	4.5	25	5.0	27
7	3.1	27	3.7	27	5.5	29	5.2	29	5.8	32
8	3.5	30	4.2	30	6.2	33	5.9	33	6.6	36
9	3.9	34	4.7	34	7.0	37	6.6	37	7.4	40
10	4.4	38	5.2	38	7.7	41	7.4	40	8.2	45
11			5.7	42	8.5	45			9.0	49
12			6.2	45	9.3	49			9.8	53
13			6.7	49	10.0	53			10.6	58
14			7.2	53	10.8	56			11.4	62
15			7.7	56	11.5	60			12.2	66
16			8.2	60	12.3	64			13.1	71

Minimum bend radius is measured from the centerline of the hose

T-Rex™ is sold in a “relaxed” state • Relaxed state is defined as the average between an extended and compressed length

T-Rex™ Fittings



T-Rex™ Swivel Part D coupler consists of a light-weight aluminum body with a stainless steel insert. It is available either factory welded directly to the hose or field welded using a weld ring (the additional weld ring allows the body and insert to be reused).

All other standard industrial and custom fittings are available upon request. Please contact Hose Master’s Customer Service Department for details.



HOSE MASTER

1233 East 222nd Street • Cleveland, Ohio 44117
(800) 221-2319 • Fax: (216) 481-7557 • www.hosemaster.com
Cleveland • Houston • Atlanta

ISO 9001 : 2000
Registered Quality System

