



FLEXAUST®

2012 / 2013 PRODUCT CATALOG

FLEXIBLE HOSE • DUCTING • ACCESSORIES



A SCHAUMBURG HOSE TECHNOLOGY COMPANY

Flexaust® has manufactured durable, long lasting, flexible hose and ducting solutions for industrial and commercial applications for 75 years. Our flexible hose products are used in applications involving air, dust, fume and lightweight materials. We offer the largest selection of products including wire reinforced coated fabric hose, wire reinforced plastic hose in regular as well as stretch construction, hand-bendable metal ducting, all plastic wet or dry vacuum hose and blow molded corrugated tubing products.

Flexaust® Product Selection Guide

There are five critical factors in selecting the proper hose and ducting for your application. These are: Size, Temperature, Application, Media and Pressure. The superior strength of Flexaust® hose and ducting makes them suitable for the pressures and velocities normally required for industrial air movement, dust collection, fume control and light bulk material handling.

S

SIZE: Specify the I.D. of the Flexaust hose or duct required.

T

TEMPERATURE: Specify media temperature (°F).

A

APPLICATION: Specify if Air, Fume, Dust and/or Light Weight Materials will be flowing through the hose or duct. See listings to the right.

M

MEDIA: Specify what media is going through the hose or duct.

P

PRESSURE: Specify type of pressure. Positive (psi), Negative (Inches Hg.) and/or Inches w.g.



Air

- Heating or Cooling
- Drying
- Dehumidifying
- Cleaning
- Dust Covers
- Supply
- Connectors
- Air Filter Intakes



Fume

- Laboratory
- Industrial
- Automotive
- Painting
- Welding
- Soldering
- Plating



Dust

- Filtering
- Movement
- Exhaust
- Duct Cleaning
- Textile Fiber Collection
- Vacuum Cleaning
- Lint Collection
- Loading (containment)
- Cutting
- Grinding



Materials

- Light Weight Material Handling
- Shavings
- Chips
- Powders
- Debris
- Leaf Collection
- Street Sweeping
- Lawn Vacuum
- Sturries
- Sawdust Collection
- Drains
- Packing Popcorn

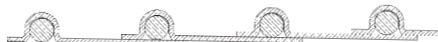
Solve your hose, ducting, and accessory problems in just 24 hours!

Flexaust's guarantee is to ship your order (250 ft. maximum order) by the end of the next business day or we pay the freight. Look for the 24-hour ship icon throughout the catalog. **Please review the chart below for specific diameters:**



PRODUCT LINE	PRODUCT NAME	AVAILABLE SIZES	
Flexadux® TR	T-7, T-7W, T-7SR	2", 2½", 3", 4", 5", 6", 8", 10", 12"	25'
Flexadux® PV	R-2 Blue or Clear R-3 Blue or Clear	1½", 2", 2½", 3", 4", 5", 6", 8", 10", 12" 2", 3", 4", 5", 6"	25' 25'
Flexadux® PU	Flx-Thane® LD Clear Flx-Thane® MD Black or Clear	4", 6", 8" 2", 2½", 3", 4", 5", 6", 7", 8", 10", 12"	25' 25'
Flex-Tube®	Flex-Tube® PV, Flex-Tube® PU	4", 6", 8"	25'
Flexaust®	CWGP FSP-2	2", 2½", 3", 3½", 4", 5", 6", 7", 8", 10", 12" 3", 4", 6"	25' 25'
Heat-Flex®	CW-325 GS	3", 4", 6" 1¼", 1½", 1¾", 2", 2½", 3", 4"	25' 12'
Flex-Lok®	Flex-Lok® 550	4", 6", 8"	25'
Springflex®	FSP-5, SD-W	8", 12"	25'
Genesis®	Commercial Gray or Black	1¼", 1½", 2", 3", 4"	50'

R-2



Size Range (In).....stock 1¼" to 18"
custom to 24"

Standard Length (Ft)25', 50'

Standard Colors blue, clear

Temperature Range (°F)..... 20° to 160°



- Light weight PVC hose reinforced with a spring steel wire helix
- Great flexibility with tight bending characteristics
- Good chemical and moisture resistance
- Good compressibility
- Excellent choice for ventilation applications, dust and fume removal
- Blue is listed as UL 94V-0 flame retardant
- Clear is manufactured with FDA acceptable materials
- Wall Thickness = .020"
- Available in metric sizes, consult sales team on pricing and minimums



R-3



Size Range (In).....stock 1¼" to 16"
custom to 24"

Standard Length (Ft)25', 50'

Standard Colors blue, clear

Temperature Range (°F)..... 20° to 160°



- Heavy weight PVC hose reinforced with a coated spring steel wire helix (sizes 14" I.D. and above not available with a coated wire)
- Excellent internal and external abrasion resistance
- Good chemical and moisture resistance
- Excellent choice for ventilation applications, dust and fume removal
- Blue is listed as UL 94V-0 flame retardant
- Clear is manufactured with FDA acceptable materials
- Wall Thickness = .045"
- Available in metric sizes, consult sales team on pricing and minimums



R-4



Size Range (In).....stock 2" to 12"

Standard Length (Ft) 10', 25', 50'

Standard Colors clear

Temperature Range (°F)..... 20° to 160°



- Medium weight PVC hose reinforced with a spring steel wire helix
- Good for positive pressure applications
- Great compressibility
- Construction allows for value packaging by reducing the box size, reducing warehouse space and shipping costs
- Ideal for dust and woodworking applications
- Good chemical and moisture resistance
- Manufactured with FDA acceptable materials
- Wall Thickness = .028"



ADC



Size Range (In).....stock 6" to 18"

Standard Length (Ft) 25'

Standard Colors clear

Temperature Range (°F)..... 20° to 160°



- Very light weight PVC hose reinforced with a spring steel wire helix
- Good for positive pressure applications
- Great compressibility
- Excellent flexibility with tight bending characteristics
- Good chemical and moisture resistance
- Manufactured with FDA acceptable materials
- Wall Thickness = .015"




D M



-

D **M**



- 

A F D M



-

D **M**

-

XLT



Size Range (In).....stock 2" to 6"
Standard Length (Ft) 25'
Standard Colors black
Temperature Range (°F)..... -60° to 275°



- Very light weight thermoplastic rubber hose reinforced with a spring steel wire helix
- Excellent compressibility and flexibility
- Most compressible thermoplastic rubber hose in product line
- Designed for applications with wide temperature ranges
- Easy to install in tight spaces
- Recommended for light duty, low pressure applications
- Great moisture and UV resistance
- Excellent chemical resistance
- Wall Thickness = .012"



LT



Size Range (In).....stock 1½" to 16"
Standard Length (Ft)25', 50'
Standard Colors black
Temperature Range (°F)..... -60° to 275°



- Light weight thermoplastic rubber hose reinforced with a spring steel wire helix
- Excellent compressibility and flexibility
- Designed for applications with wide temperature ranges
- Great moisture and UV resistance
- Excellent chemical resistance
- Smooth interior assures minimal friction loss and efficient air flow
- Wall Thickness = .020"
- Available with factory-installed 2" soft cuffs



HT



Size Range (In).....stock 1½" to 16"
Standard Length (Ft)25', 50'
Standard Colors black
Temperature Range (°F)..... -60° to 275°



- Heavy weight thermoplastic rubber hose reinforced with a spring steel wire helix
- Suitable for more demanding positive and negative pressure applications
- Designed for applications with wide temperature ranges
- Great moisture and UV resistance
- Excellent chemical resistance
- Smooth interior assures minimal friction loss and efficient air flow
- Wall Thickness = .045"
- Available with factory-installed 2" soft cuffs



HT-W



Size Range (In).....stock 8" to 12"
Standard Length (Ft) 25'
Standard Colors black with yellow wearstrip
Temperature Range (°F)..... -60° to 275°



- Heavy weight thermoplastic rubber hose reinforced with a spring steel wire helix and external polypropylene wearstrip
- Wearstrip offers additional external abrasion and drag resistance
- Suitable for more demanding positive and negative pressure applications including lawn and leaf collection
- Designed for applications with wide temperature ranges
- Great moisture and UV resistance
- Excellent chemical resistance
- Smooth interior assures minimal friction loss and efficient air flow
- Wall Thickness = .045"



Flx-Thane® LD



Size Range (In).....stock 2" to 18"
 Standard Length (Ft) 25'
 Standard Colorsclear, black
 Temperature Range (°F).....-65° to 225°



- Light weight polyurethane hose reinforced with a bronze coated spring steel wire helix
- Great compressibility
- Great abrasion resistance
- Superior chemical resistance
- Excellent flexibility
- Designed for applications with wide temperature ranges
- Clear is manufactured with FDA acceptable materials
- Available in metric sizes, consult sales team on pricing and minimums
- Wall Thickness = .020"
- Available with factory-installed 2" soft cuffs



Flx-Thane® MD



Size Range (In).....stock 2" to 24"
 Standard Length (Ft)25', 50'
 Standard Colors black, clear
 Temperature Range (°F).....-65° to 225°



- Medium weight polyurethane hose reinforced with a bronze coated spring steel wire helix
- Good compressibility
- Great abrasion resistance and high tear strength
- Superior chemical resistance
- Excellent flexibility
- Designed for applications with wide temperature ranges
- Very good low temperature flexibility
- Clear is manufactured with FDA acceptable materials
- Available in metric sizes, consult sales team on pricing and minimums
- Wall Thickness = .030"
- Available with factory-installed 2" soft cuffs



Flx-Thane® HD



Size Range (In).....stock 2" to 24"
 Standard Length (Ft) 25'
 Standard Colorsclear, black
 (translucent blue available)
 Temperature Range (°F).....-65° to 225°



- Heavy weight polyurethane hose reinforced with a coated spring steel wire helix (sizes 14" I.D. and above not available with a coated wire)
- Great abrasion resistance and high tear strength
- Superior chemical resistance
- Excellent flexibility
- Designed for applications with wide temperature ranges
- Ideal for severe service applications
- Very good low temperature flexibility
- Clear is manufactured with FDA acceptable materials
- Available in metric sizes, consult sales team on pricing and minimums
- Wall Thickness = .045"
- Available with factory-installed 2" soft cuffs



Flx-Thane® VHD



Size Range (In).....stock 4" to 18"
 custom to 24"
 Standard Length (Ft) 25'
 Standard Colorsclear, black
 (translucent blue available)
 Temperature Range (°F).....-65° to 225°



- Very heavy weight polyurethane hose reinforced with a coated spring steel wire helix (sizes 14" I.D. and above not available with a coated wire)
- Great abrasion resistance and high tear strength
- Superior chemical resistance
- Excellent flexibility
- Designed for applications with wide temperature ranges
- Ideal for severe service applications
- Very good low temperature flexibility
- Clear is manufactured with FDA acceptable materials
- Available in metric sizes, consult sales team on pricing and minimums
- Wall Thickness = .060"
- Available with factory-installed 2" soft cuffs



Flx-Thane® SD



Size Range (In).....stock 2" to 12"
Standard Length (Ft)25', 50'
Standard Colors black, clear
Temperature Range (°F)..... -65° to 225°



- Medium weight static dissipative polyurethane hose reinforced with a bronze coated spring steel wire helix
- Great abrasion resistance and high tear strength
- Superior chemical resistance and excellent flexibility
- Designed for applications with wide temperature ranges
- Ideal for clean rooms and material plastic processing applications
- Reduces static build-up in material handling applications
- Surface resistivity level: 10^8 - 10^{10} Ohms/Square
- Clear is manufactured with FDA acceptable materials
- Wall Thickness = .030"
- Available with factory-installed 2" soft cuffs



Flx-Thane® SE



Size Range (In).....stock 2" to 12"
custom to 24"
Standard Length (Ft)25', 50'
Standard Colors clear
Temperature Range (°F)..... -65° to 225°



- Self-extinguishing medium weight polyurethane hose reinforced with a bronze coated spring steel wire helix
- Halogen-free
- Good compressibility
- Great abrasion resistance and high tear strength
- Superior chemical resistance
- Excellent flexibility
- Designed for applications with wide temperature ranges
- Good low temperature flexibility
- Manufactured with flame retardant materials
- Wall Thickness = .030"



Flexadux® TR and PU Cuffed Ends

- Heat welded
- Provides a tight seal and smooth clamping surface
- Eliminates the need for bridge clamps
- Cuffed ends are 2" wide
- Available on T-7, T-7SR, LT, HT, LD, MD, HD, VHD, SD



TR and PU Cuffed Ends

Also available for our Flexaust®, Flexadux®, Flex-Tube®, Heat-Flex®, Flex-Lok®, and Springflex® hoses. Neoprene coating also available.



Reducers



Transitions



Y's



T's



Branches

Flex-Tube® PV



Size Range (In).....stock 2½" to 10"
Standard Length (Ft)12', 25'
Standard Colorsclear with black helix
Temperature Range (°F).....20° to 160°



- Medium weight co-extruded PVC hose with a rigid external PVC helix
- Economical
- Ultra smooth interior wall assures efficient airflow
- Very flexible and crush resistant
- Spiral co-extruded engineered construction
- Helix acts as a wearstrip
- Wall Thickness = .030" (2.5" to 3"), .032" (4"), .035" (5" to 8"), .040" (9" to 10")
- OEM lengths and colors available
- Available in a flame retardant version (Flex-Tube® PV-FR)
- Cuffs available



Flex-Tube® PU



Size Range (In).....stock 2½" to 10"
Standard Length (Ft)12', 25'
Standard Colorsclear with yellow helix
Temperature Range (°F).....-40° to 200°



- Medium weight co-extruded thermoplastic ether based polyurethane hose with a rigid external ABS helix
- Ultra smooth interior assures efficient airflow
- Great abrasion resistance
- Excellent wear performance
- Puncture and tear resistant with high tensile strength
- Good low temperature flexibility
- Crush resistant
- Spiral co-extruded engineered construction
- Helix acts as a wearstrip
- Excellent hydrolysis and microbial resistance
- Wall Thickness = .032" (2.5"), .033" (3" to 5"), .035" (6" to 8"), .040" (9" to 10")
- OEM lengths and colors available
- Cuffs available



Flex-Tube® TR



Size Range (In).....stock 2½" to 10"
Standard Length (Ft)25', 50' (10" in 25' only)
Standard Colorsblack with black helix
Temperature Range (°F).....-60° to 275°
intermittent to 300°



- Medium weight co-extruded thermoplastic rubber hose with a rigid external polypropylene helix
- Ultra smooth interior wall assures efficient airflow
- Very flexible and crush resistant
- Tight bend radius
- Moisture and chemical resistant
- Designed for applications with wide temperature ranges
- Spiral co-extruded engineered construction
- Helix acts as a wearstrip
- Wall Thickness = .026" (2.5" to 5"), .035" (6" to 8"), .040" (10")
- OEM lengths and colors available
- Available in a flame retardant version (Flex-Tube TR-FR)
- Cuffs available



Flex-Tube® EF (Eco-Friendly)



Size Range (In).....stock 2½" to 10"
Standard Length (Ft)25', 50'
Standard Colorsclear with green helix
Temperature Range (°F).....-40° to 225°



- Medium weight co-extruded polyolefin elastomer hose with a rigid external polypropylene helix
- Environmentally friendly PVC replacement hose
- Ultra smooth interior assures efficient airflow
- Spiral co-extruded engineered construction
- Helix acts as a wearstrip
- Good chemical and abrasion resistance
- Low outgassing and low VOC vs. standard PVC hose
- Also available in a wire reinforced version (EF-4)
- Also available in a flame retardant version (EF-FR)
- Wall Thickness = .028" (2.5" to 4"), .030" (5"), .035" (6" to 10")
- Cuffs available



FlexStat®



Size Range (In).....stock 1" to 8"
Standard Length (Ft)25', 50'
Standard Colorsclear with black helix
Temperature Range (°F).....-40° to 200°



- Specially formulated static dissipative polyurethane hose reinforced with a rigid ABS helix and an embedded copper grounding wire
- Extremely flexible with great abrasion resistance vs. heavy walled PVC
- Smooth interior assures minimal friction loss
- Enclosed copper grounding wire reduces static build-up in material handling applications
- Permanent and non-humidity dependent ESD (electrostatic discharge) protection
- Surface Resistivity Level: 10^8 - 10^{10} Ohms/Square
- Ideal for plastic pellet and powder transfer
- Manufactured with FDA acceptable materials
- Wall Thickness = .040"
- Cuffs available



FlexStat® CR



Size Range (In).....stock 1" to 8"
Standard Length (Ft)25', 50'
Standard Colorsclear with white helix
Temperature Range (°F).....-40° to 200°



- Specially formulated static dissipative polyurethane hose reinforced with a rigid external ABS helix and an embedded copper grounding wire
- Extremely flexible with great abrasion resistance vs. heavy walled PVC
- Smooth interior assures minimal friction loss
- Enclosed copper grounding wire reduces static build-up in material handling applications
- Permanent and non-humidity dependent ESD (electrostatic discharge) protection
- Ideal for clean room and pharmaceutical applications
- Surface Resistivity Level: 10^8 - 10^{10} Ohms/Square
- Manufactured with FDA acceptable materials
- Wall Thickness = .040"
- Cuffs available



FlexStat® 60



Size Range (In).....stock 4" to 8"
Standard Length (Ft)25', 50'
Standard Colorsclear with yellow helix
Temperature Range (°F).....-40° to 200°



- Specially formulated static dissipative polyurethane hose reinforced with a rigid external ABS helix and an embedded copper grounding wire
- Extreme abrasion resistance & handles high vacuum
- Smooth interior assures minimal friction loss
- Enclosed copper grounding wire reduces static build-up in material handling applications
- Permanent and non-humidity dependent ESD (electrostatic discharge) protection
- Ideal severe service applications, hopper loading systems & railcar loading/unloading
- Surface Resistivity Level: 10^8 - 10^{10} Ohms/Square
- Wall Thickness = .060"
- Cuffs available for 4" ID



FLEXAUST®

ACCESSORIES

Flex-Tube® Accessories

Also available for our Flexadux®, Flexaust®, Flex-Tube®, Heat-Flex®, Flex-Lok® (excluding Screw Clamps) and Springflex® hoses.



Screw Cuffs



Bridge Clamps



J-Locks



Connectors



Pin-Locks



Latch-Locks

CWGP



Size Range (In).....stock 1" to 24"
custom to 60"
Standard Length (Ft) 25'
Standard Colors black
Temperature Range (°F)..... -40° to 250°



- Double-ply neoprene coated polyester fabric hose reinforced with a spring steel wire helix
- Good crush resistance and tensile strength
- Neoprene coating offers excellent abrasion and chemical resistance
- Good flexibility
- More durable than double-ply cotton hoses
- Listed as UL 94V-0 flame retardant
- Additional coatings available for better abrasion and/or chemical resistance
- Available in a static conductive version (Conduct-O-Flex)
- Available in metric sizes, consult sales team on pricing and minimums



CWC-W



Size Range (In).....stock 3" to 24"
custom to 60"
Standard Length (Ft) 25'
Standard Colors black with yellow wearstrip
Temperature Range (°F)..... -40° to 250°



- Double-ply neoprene coated polyester fabric hose reinforced with a spring steel wire helix and external PVC coated polyester wearstrip
- Wearstrip offers additional external abrasion and drag resistance
- Good crush resistance and tensile strength
- Neoprene coating offers excellent abrasion and chemical resistance
- Listed as UL 94V-0 flame retardant
- Additional coatings available for better abrasion and/or chemical resistance



CWS



Size Range (In).....stock 1½" to 16"
custom to 20"
Standard Length (Ft) 25'
Standard Colors black
Temperature Range (°F)..... -65° to 250°



- Single-ply neoprene coated polyester fabric hose reinforced with a spring steel wire helix
- Recommended for light duty, low pressure applications
- Extremely flexible
- Neoprene coating offers excellent abrasion and chemical resistance
- Designed for applications with wide temperature ranges
- Listed as UL 94V-0 flame retardant
- Additional coatings available for better abrasion and/or chemical resistance



CWY



Size Range (In).....stock 4" to 24"
custom to 60"
Standard Length (Ft) 25'
Standard Colors black
Temperature Range (°F)..... -40° to 250°



- Double-ply neoprene coated nylon fabric hose reinforced with a spring steel wire helix
- Neoprene and nylon construction offers excellent abrasion resistance and superior flex life
- Handles both positive and negative pressure
- Excellent tensile strength
- Available with an external PVC coated polyester wearstrip (CWY-W)
- Additional coatings available for better abrasion and/or chemical resistance



White



Size Range (In).....stock 1½" to 24"
Standard Length (Ft) 25'
Standard Colorswhite
Temperature Range (°F)..... -20° to 325°



- Double-ply acrylic coated polyester fabric hose reinforced with a spring steel wire helix
- Efficient flow characteristics
- Designed for applications with wide temperature ranges
- Good abrasion resistance
- Ideal for clean room applications
- Manufactured with FDA acceptable materials



FSP-1



Size Range (In).....stock 3" to 12"
Standard Length (Ft) 25'
Standard Colorsblack with orange wearstrip
Temperature Range (°F)..... -20° to 180°



- Single-ply PVC vinyl coated polyester fabric hose reinforced with a spring steel wire helix and external PVC wearstrip
- Wearstrip offers additional external abrasion and drag resistance
- Low friction loss
- Great chemical and moisture resistance
- Listed as UL 94V-0 flame retardant
- Other wearstrip colors available
- Available without a wearstrip for a more economical option
- Additional coatings available for better abrasion and/or chemical resistance
- Available in metric sizes, consult sales team on pricing and minimums



FSP-2



Size Range (In).....stock 3" to 12"
Standard Length (Ft) 25'
Standard Colorsblack with orange wearstrip
Temperature Range (°F)..... -20° to 180°



- Double-ply PVC vinyl coated polyester fabric hose reinforced with a spring steel wire helix and external PVC wearstrip
- Wearstrip offers additional external abrasion and drag resistance
- Great moisture, mildew and chemical resistance
- Low friction loss
- Listed as UL 94V-0 flame retardant
- Other wearstrip colors available
- Available in a heavy duty bridge construction (FSP Bridge)
- Additional coatings available for better abrasion and/or chemical resistance



Flexaust® End Finishes

Also available for our Heat-Flex® (excluding Reduced Cuff and Felt Flange) and Springflex® hoses.



Enlarged Cuff



Steel Flange



Fabric Cuff



Reduced Cuff



Felt Flange

FSP-5



Size Range (In).....stock 4" to 24"
custom to 48"

Standard Length (Ft) 25'

Standard Colors yellow with black wearstrip

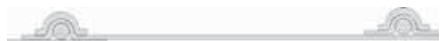
Temperature Range (°F)..... -20° to 180°



- Single-ply PVC vinyl coated polyester fabric hose reinforced with a spring steel wire helix and external PVC wearstrip
- Lightweight duct for blower applications
- Great compressibility with an 11:1 compressibility ratio
- Retractability allows for convenient storage and easy transport in a fraction of its fully extended length
- Wearstrip offers additional external abrasion and drag resistance
- Listed as UL 94V-0 flame retardant
- Manufactured with materials that meet NFPA 701 standards
- Shown with optional cuff



SD-W



Size Range (In).....stock 4" to 24"
custom to 60"

Standard Length (Ft) 25'

Standard Colors yellow with black wearstrip

Temperature Range (°F)..... -65° to 250°



- Single-ply neoprene coated polyester fabric hose reinforced with a spring steel wire helix and external PVC wearstrip
- Ideal for moving large volumes of air in portable or permanent ventilation/exhaust systems
- Wearstrip offers additional external abrasion and drag resistance
- Great compressibility
- Retractability allows for convenient storage and easy transport in a fraction of its fully extended length
- Listed as UL 94V-0 flame retardant
- Available in a self-retracting version (STO), 4" to 8" only
- Shown with optional cuff



SD



Size Range (In).....stock 4" to 24"
custom to 60"

Standard Length (Ft) 25'

Standard Colors yellow

Temperature Range (°F)..... -65° to 250°



- Single-ply neoprene coated polyester fabric hose reinforced with a spring steel wire helix
- Ideal for moving large volumes of air in portable or permanent ventilation/exhaust systems
- Great compressibility
- Retractability allows for convenient storage and easy transport in a fraction of its fully extended length
- Listed as UL 94V-0 flame retardant
- Shown with optional cuff



FLEXAUST®

ACCESSORIES

Springflex® End Finishes

Flexaust® offers a variety of end finishes including several types of fabric cuffs for the Springflex® product line. Assembling hoses with various types of required end finishes is another way in which Flexaust® services its customers and reduces costs.



Sewn Cuff



Standard/Enclosed
Belted Cuff

AWP-W



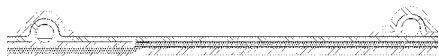
Size Range (In).....stock 8" to 24"
custom to 48"
Standard Length (Ft) 25'
Standard Colors yellow with black wearstrip
Temperature Range (°F)..... -20° to 325°



- Single-ply acrylic coated polyester fabric hose reinforced with a spring steel wire helix and external PVC wearstrip
- Ideal for moving large volumes of air in portable or permanent ventilation/exhaust systems
- Wearstrip offers additional external abrasion and drag resistance
- Great compressibility
- Retractability allows for convenient storage and easy transport in a fraction of its fully extended length
- Listed as UL 94V-0 flame retardant
- Shown with optional cuff



Arctic Duct 3



Size Range (In).....stock 4" to 24"
Standard Length (Ft) 25'
Standard Colors yellow with black wearstrip
Temperature Range (°F)..... -20° to 180°



- Two single-ply PVC vinyl coated polyester fabric plies protecting an insulation barrier reinforced with a spring steel wire helix and external PVC wearstrip
- Ideal use for both permanent and mobile air conditioning applications
- PVC material resists ozone, UV rays and moisture
- Compressibility allows for convenient storage
- Wearstrip offers additional external abrasion and drag resistance
- Other Arctic Duct constructions available
- Manufactured with flame retardant materials
- Made with sewn cuff on each end



Arctic Duct U



Size Range (In).....stock 4" to 20"
custom to 48"
Standard Length (Ft)made to order
Standard Colors yellow with black wearstrip
Temperature Range (°F)..... -40° to 250°



- Two single-ply neoprene coated polyester fabric plies protecting an insulation barrier reinforced with a spring steel wire helix and external PVC coated polyester wearstrip
- Good for air handling applications
- High tensile strength
- Wearstrip offers additional external abrasion and drag resistance
- Compressibility allows for convenient storage
- Designed for applications with wide temperature ranges
- Manufactured with flame retardant materials
- Made with sewn cuff on each end



Funnel Cuff



Belt Loop and Pull Tabs



Wire Rope/Nylon Ring



Sto-Sack®

GS



Size Range (In).....stock ¾" to 12"
Standard Length (Ft) 12'
Standard Colors iron oxide red
Temperature Range (°F)..... -65° to 550°
intermittent to 600°



- Double-ply silicone coated fiberglass fabric hose reinforced with a spring steel wire helix and external filament fiberglass cord
- Suited for high temperature air handling applications
- The narrow pitch allows for tight bending radius while maintaining a smooth air flow
- Ideal for plastic processing applications
- Non-kinking
- Resistant to many oils and solvents, ozone, water, fungus and alkalis
- Not recommended for continuous flexing



CWGS



Size Range (In).....stock 2" to 12"
Standard Length (Ft) 25'
Standard Colors iron oxide red
Temperature Range (°F)..... -65° to 550°



- Single-ply silicone coated fiberglass fabric hose reinforced with a spring steel wire helix
- Light weight and flexible
- Available in longer lengths than traditional mandrel-built hose
- Resistant to many oils and solvents, ozone, water, fungus and alkalis
- Not recommended for continuous flexing



BDS



Size Range (In).....stock 1" to 12"
Standard Length (Ft) 12'
Standard Colors iron oxide red
Temperature Range (°F)..... -65° to 500°



- Single-ply silicone coated fiberglass fabric hose reinforced with a spring steel wire helix and external filament fiberglass cord
- Suited for high temperature air handling applications
- The narrow pitch allows for tight bending radius while maintaining a smooth air flow
- Non-kinking
- Resistant to many oils and solvents, ozone, water, fungus and alkalis
- Not recommended for continuous flexing



CW-325



Size Range (In).....stock 2" to 12"
custom to 16"
Standard Length (Ft) 25'
Standard Colors black
Temperature Range (°F)..... -20° to 325°



- Single-ply acrylic coated polyester fabric hose reinforced with a spring steel wire helix
- Ideal for air and fume handling applications
- Excellent choice for overhead vehicle exhaust systems
- Light weight and flexible
- Listed as UL 94V-0 flame retardant
- Available with an external PVC wearstrip (CW-325-W)



NS



Size Range (In).....stock 1" to 12"
Standard Length (Ft) 12'
Standard Colors iron oxide red inner layer
black outer layer
Temperature Range (°F)..... -65° to 550°



- Double-ply fabric hose with a silicone coated fiberglass inner layer and a silicone coated Nomex® outer layer reinforced with a spring steel wire helix and external filament fiberglass cord
- Nomex® material increases flex life and abrasion resistance
- Suited for high temperature air handling applications
- The narrow pitch allows for tight bending radius while maintaining a smooth air flow
- Ideal for applications where constant flexing is involved
- Non-kinking
- Resistant to many oils and solvents, ozone, water, fungus and alkalis



GN



Size Range (In).....stock 1" to 12"
Standard Length (Ft) 12'
Standard Colors black
Temperature Range (°F)..... -40° to 300°



- Double-ply neoprene coated fiberglass fabric hose reinforced with a spring steel wire helix and external filament fiberglass cord
- Offers higher temperature characteristics than traditional neoprene hoses
- The narrow pitch allows for tight bending radius while maintaining a smooth air flow
- Non-kinking
- Not recommended for continuous flexing



Flex-Vest®



Size Range (In).....stock 1" to 6"
custom to 8"
Standard Length (Ft) 12'
custom to 25'
Standard Colors iron oxide red inner layer
black outer layer
Temperature Range (°F) . -65° to 550° inner layer
intermittent to 600°
-40° to 250° outer layer



- Inner Layer; Double-ply silicone coated fiberglass fabric hose reinforced with a spring steel wire helix
- Outer layer; Single-ply neoprene coated polyester fabric hose reinforced with a spring steel wire helix
- Insulation; 1-inch fiberglass insulation (R Value=4)
- Insulated dryer hose
- Combines flexibility with minimal heat loss
- Suited for air handling applications at low positive and low negative pressures
- Good flexibility
- Excellent chemical resistance



Raceflex®



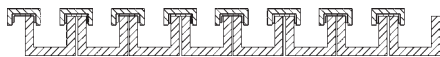
Inside Diameter (In).....stock 1½" to 3"
custom to 8"
Standard Length (Ft) 12'
Standard Colors silver
Temperature Range (°F)..... -65° to 625°



- Light weight laminate of fiberglass and vacuum metallized polyester film
- Heat reflective to 625°F
- Light weight and flexible
- Smooth bend radius
- 2.64-inch compression per foot of hose
- Designed for brake ducting and ventilation of drive compartments in racecars



STM



Size Range (In).....stock 1½", 2"
Standard Length (Ft)25', 50'
Standard Colorsorange, blue
Temperature Range (°F).....-40° to 160°



- Polyethylene copolymer hose reinforced with an integral polyethylene helix
- Double profile I-Helix construction for easy movement on surfaces
- Ideal for both truck-mounted and portable carpet cleaning units
- Very flexible
- Superior abrasion resistance
- Crush resistant
- Designed to resist corrosion caused by the combination of hot water and chemical concentration of detergents
- All sizes handle a full vacuum
- Smooth interior assures efficient air flow
- Made with factory-installed polyweld cuffs



Mark 2



Size Range (In)... stock 1½", 2", 2½", 3", 3½", 4"
Standard Length (Ft)25', 50'
Standard Colors clear
Temperature Range (°F).....-40° to 140°



- Medium weight polyethylene hose reinforced with a translucent integral polyethylene helix
- Ideal for insulation blowing applications
- Easy to handle
- Translucent walls offer easy monitoring of material flow and blockage
- Convoluted interior design creates efficient air flow that aerates insulation materials and increases machine efficiency with regard to coverage and density
- Crush resistant
- Manufactured with FDA acceptable materials
- Available with different color helixes to match OEM equipment



Commercial



Size Range (In)... stock 1¼", 1½", 2", 2½", 3", 4"
Standard Length (Ft)25', 50'
Standard Colorsgray, black
Temperature Range (°F).....-40° to 140°



- Polyethylene copolymer hose reinforced with an integral polyethylene helix
- Double profile I-Helix construction for easy movement on surfaces
- For industrial and commercial vacuum applications
- Crush resistant
- Excellent flexing characteristics
- Superior abrasion resistance
- Smooth interior assures efficient air flow
- All sizes handle a full vacuum
- Cuffs available



Flx Plus



Size Range (In).....stock 1", 1 ¼", 1 ½", 2",
2 ½", 3", 3 ½", 4"
Standard Length (Ft)25', 50'
Standard Colors gray
Temperature Range (°F).....-40° to 140°



- Polyethylene copolymer hose reinforced with an integral polyethylene helix
- Light weight and flexible even at low temperatures
- Tight bending characteristics
- High abrasion resistance
- Wet or dry vacuum in car wash, commercial and industrial applications
- Crush resistant
- Smooth interior assures efficient air flow
- Very good chemical resistance
- All sizes handle a full vacuum
- Cuffs available



Tiger Tail®



Size Range (In)..... stock 1½", 2", 3", 4"
Standard Length (Ft)25', 50'
Standard Colors yellow and black
Temperature Range (°F) -40° to 140°



- Rugged polyethylene copolymer hose reinforced with an integral polyethylene helix
- Improved polymer formula & 25% thicker to extend life
- Double helix design allows for superior flexibility and durability
- Ideal for waste evacuation, septic pumping and sewer cleaning
- Superior abrasion, better crush resistance and resists kinking
- All sizes handle a full vacuum
- Made with factory-installed leak proof polyweld cuffs
- Threaded replacement screw cuffs and specially formulated replacement hose glue available

Improved!



Uni-Loop



Size Range (In)..... stock 1", 1¼", 1½", 2"
Standard Length (Ft) 50'
Standard Colors gray
Temperature Range (°F) -40° to 140°



- Light weight polyethylene copolymer hose reinforced with an integral polyethylene helix
- Smooth interior assures efficient air flow
- Superior external abrasion resistance
- Good flexibility with tight bending characteristics
- Crush resistant
- Ideal for use in light weight vacuum applications and as a drain hose
- Suitable for conduit for wiring
- Meets IAPMO compliance
- Cuffs available



ULT



Size Range (In)..... stock 1", 1¼", 1½", 2"
Standard Length (Ft)25', 50'
Standard Colors platinum
Temperature Range (°F) -40° to 140°



- Light weight premium grade polyethylene copolymer hose reinforced with an integral polyethylene helix
- Smooth interior assures very efficient air flow
- Superior external abrasion resistance
- Great flex life for long lasting hose life in applications
- Crush resistant
- Ideal for use in light weight vacuum applications and as a drain hose
- Very durable and flexible in hot and cold applications – meets ASTM 595
- Withstands severe twisting with nearly 100% bounce-back
- Cuffs available



GPE



Size Range (In)..... stock 2", 2½", 3", 4"
Standard Length (Ft)25', 50'
Standard Colors black
Temperature Range (°F) -40° to 140°



- Light weight polyethylene hose reinforced with an integral polyethylene helix
- Suited for low pressure air movement and fume extraction
- Excellent for light vacuum applications
- Light weight and very flexible
- Economical choice for woodworking and dust collection applications
- Moderate abrasion resistance
- Crush resistant



DPZ



Size Range (In)..... stock 1 ¼", 1 ½", 2"
 Standard Length (Ft)25', 50'
 Standard Colors gray
 Temperature Range (°F)..... -40° to 140°



- Light weight polyethylene copolymer hose reinforced with an integral polyethylene helix
- Smooth interior assures efficient air flow
- Light weight and flexible even at low temperatures
- Superior external abrasion resistance
- Ideal for wet/dry vacuum in car wash, commercial and industrial applications
- Very good chemical resistance
- Crush resistant
- Cuffs and custom colors available



DPZ-C



Size Range (In)..... stock 1 ¼", 1 ½", 2"
 Standard Length (Ft)25', 50'
 Standard Colors black with white skimcoat
 Temperature Range (°F)..... -40° to 140°



- Light weight polyethylene conductive copolymer hose with a white skimcoat reinforced with an integral polyethylene helix
- Conductive and crush resistant
- Provides a surface resistivity of 10³-10⁵ Ohms/Sq
- Smooth interior assures efficient air flow
- Ideal for industrial vacuum & light bulk material applications where static may be an issue
- Superior external abrasion resistance
- Static conductive screw and swivel cuffs available
- Custom colors available



DAYFLEX®

MG-V



Size Range (In).....stock ¾" to 2"
 Standard Length (Ft) 50'
 Standard Colors gray
 Temperature Range (°F)..... -10° to 160°



- PVC hose reinforced with a vinyl coated spring steel wire helix
- Light weight and flexible
- Good chemical resistance
- Popular choice for floor care industry and general industrial vacuum applications
- Cuffs available
- Other colors available
- Available in a stretch version (MG-S)



MG-U



Size Range (In).....stock ¾" to 2"
 Standard Length (Ft) 50'
 Standard Colors black
 Temperature Range (°F)..... -60° to 160°



- Elastomer polyurethane hose reinforced with a vinyl coated spring steel wire helix
- Light weight & flexible
- Good chemical resistance
- Excellent abrasion resistance
- Cuffs available
- Other colors available



Saniflex®



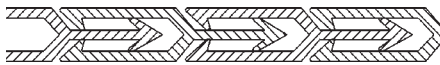
Size Range (In).....stock ¾" to 2"
 Standard Length (Ft) 50'
 Standard Colors natural
 Temperature Range (°F)..... -20° to 180°



- Plastic helix supported PVC tape hose
- Very smooth inner surface assures minimal friction loss and efficient air flow
- Light weight and flexible
- Can also be compounded in polyurethane and thermoplastic rubber elastomer materials
- Ideal as a potable water hose in RV applications
- Meets IAPMO compliance



Pliaduct®



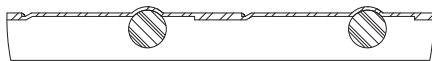
Size Range (In).....stock 2" to 12"
 Standard Length (Ft)25' (2"-6"), 10' (8"-12")
 Standard Colors gray
 Temperature Range (°F)..... -10° to 150°



- 100% rigid self-supporting PVC material with a ribbon-lock construction
- Diameter is adjustable by hand and can be reduced or expanded by approximately 25% of original I D
- Chemical resistant
- May be shaped and reshaped and spliced together without special tools
- Excellent for either temporary or permanent installation
- Manufactured with flame retardant materials



DFD-T



Size Range (In)..... stock 1", 1¼", 1½", 1¾",
 2", 2¼", 2½", 3", 4"
 Standard Length (Ft)25', 50'
 Standard Colors black
 Temperature Range (°F)..... -40° to 225°



- Light weight thermoplastic rubber hose reinforced with an internal polypropylene helix
- Pliable helix can be formed to fit various applications
- Flexible, crush resistant and compressible
- Meets FMVSS 302 flame standards
- Great choice for heater/defroster and ventilation applications
- Can also be manufactured with PVC materials



FTE-T



Size Range (In)..... stock 1", 1 ¼", 1 ½",
 1 ¾", 2", 2 ¼"
 Standard Length (Ft)25', 50'
 Standard Colors black with gray helix
 Temperature Range (°F)..... -60° to 275°
 intermittent to 300°








- Light weight thermoplastic rubber hose reinforced with an external polypropylene helix
- Very smooth interior assures minimal friction loss and efficient air flow
- Very flexible and crush resistant
- Can also be manufactured in FDA, polyurethane and PVC elastomer materials
- Ideal for dust collection, fume exhaust and conduit applications



Accessories & End Finishes for Flexaust® Vacuum Hose Product Line

Flexaust® offers a wide variety of cuffs and connectors for the Genesis®, Dayflex® and Flex-Tube® hose product lines. These cuffs and connectors are made of PVC and create a tight seal by screwing on the cuff and/or connector.

		Genesis® Commercial	Genesis® FLX Plus	Genesis® Tiger Tail®	Genesis® Uni-Loop	Genesis® ULT	Genesis® DPZ	Genesis® DPZ-C	Dayflex® MG-V	Dayflex® MG-U	Flex-Tube® & FlexStat®
Screw Cuff Gray DC201 - 1.25" I.D.		✓	✓		✓	✓	✓				
Screw Cuff Gray DC900 - 1.50" I.D.		✓	✓		✓	✓	✓				
Screw Cuff Gray DC380 - 2.00" I.D.		✓	✓		✓	✓					
Screw Cuff Gray DC384 - 2.00" I.D.							✓				
Screw Cuff Gray DC800 - 2.50" I.D. DC801 - 3.00" I.D. DC802 - 4.00" I.D.		✓									
Screw Cuff Gray TT754 - 1.00" I.D. TT755 - 1.25" I.D. TT469 - 1.50" I.D. TT615 - 2.00" I.D.									✓	✓	
Screw Cuff Gray DC280 - 1.50" I.D. screw cuff enlarged to fit a 2.00" OD wand		✓	✓		✓	✓	✓				
Screw Cuff Gray DC400 - 2.00" I.D. screw cuff reduced to fit a 1.50" OD wand		✓	✓		✓	✓					
Screw Cuff Black DC202 - 1.25" I.D.		✓	✓		✓	✓	✓				
Screw Cuff Black DC901 - 1.50" I.D.		✓	✓		✓	✓	✓				
Screw Cuff Black DC381 - 2.00" I.D.		✓	✓		✓	✓					
Conductive Screw Cuff Black DC207 - 1.25" I.D. DC907 - 1.50" I.D. DC387 - 2.00" I.D.								✓			
Conductive Swivel Cuff Black DC957 - 1.50" I.D. DC956 - 2.00" I.D.								✓			
Screw Cuff White DC902 - 1.50" I.D.		✓	✓		✓	✓	✓				

		Genesis® Commercial	Genesis® FLX Plus	Genesis® Tiger Tail®	Genesis® Uni-Loop	Genesis® ULT	Genesis® DPZ	Genesis® DPZ-C	Dayflex® MG-V	Dayflex® MG-U	Flex-Tube® & FlexStat®
Flex-Tube® Screw Cuff White DC791 - 1.25" I.D. DC795 - 1.50" I.D. DC792 - 2.00" I.D. DC796 - 2.50" I.D. DC793 - 3.00" I.D. DC794 - 4.00" I.D.											✓
Screw Cuff White DC383 - 2.00" I.D.		✓	✓		✓	✓					
Swivel Cuff Gray DC430 - 1.25" I.D.		✓	✓		✓	✓	✓				
Swivel Cuff Gray DC440 - 1.50" I.D.		✓	✓		✓	✓	✓				
Swivel Cuff Gray DC450 - 2.00" I.D.		✓	✓		✓	✓					
Swivel Cuff Gray DC455 - 2.00" I.D. swivel cuff reduced to fit 1.50" OD wand		✓	✓		✓	✓					
Screw Cuff Nozzle Gray DC100 - 1.50" I.D. 45°		✓	✓		✓	✓	✓				
Screw Cuff Nozzle Gray DC160 - 2.00" I.D. 45°		✓	✓		✓	✓					
Screw Cuff Nozzle Gray DC140 - 2.00" ID 30° screw cuff nozzle with 1.50" I.D. nozzle end		✓	✓		✓	✓					
Double Threaded Connector Gray DC180 - 1.25" I.D.		✓	✓		✓	✓	✓				
Double Threaded Connector Gray DC240 - 1.50" I.D.		✓	✓		✓	✓	✓				
Double Threaded Connector Gray DC360 - 2.00" I.D.		✓	✓		✓	✓					
*Replacement Screw Cuff Black DC621 - 1.50" I.D. DC622 - 2.00" I.D. DC623 - 3.00" I.D. DC624 - 4.00" I.D.				✓							

* Specially formulated replacement hose glue is available for these replacement cuffs.

* Negative pressure fan system with ambient air inlet recommended to maximize effectiveness and life of duct.

Flex-Lok® 550



Size Range (In).....stock 4" to 18"
custom to 20"

Standard Length (Ft) 25'

Standard Colorssilver

Temperature Range (°F)..... -65° to 550°



- Single-ply silicone coated fiberglass fabric hose mechanically crimped in a continuous process
- Fabric is locked around a coated steel wire by a metal strip formed into a clip
- Metal strip acts as a wearstrip and offers outstanding external abrasion resistance
- Extremely flexible and compressible
- Flame retardant to UL 94V-0
- Ideal for medium temperature heater and floor exhaust applications
- Available with a non-marking TPR rubber clip cover to protect the helix and the equipment that is attached to the hose



Flex-Lok® 600



Size Range (In).....stock 4" to 18"
custom to 20"

Standard Length (Ft) 25'

Standard Colorssilver

Temperature Range (°F)..... -65° to 600°



- Double-ply construction silicone coated fiberglass fabric hose with a heat-resistant fiberglass liner mechanically crimped in a continuous process
- Fabric is locked around a coated steel wire by a metal strip formed into a clip
- Metal strip acts as a wearstrip and offers outstanding external abrasion resistance
- Extremely flexible and compressible
- Flame retardant to UL 94V-0
- Ideal for medium temperature fume control and vehicle exhaust applications
- Available with a non-marking TPR clip cover to protect the helix & the equipment that is attached to the hose



Flex-Lok® 1050



Size Range (In).....stock 4" to 18"
custom to 20"

Standard Length (Ft) 25'

Standard Colors silver with a silver liner

Temperature Range (°F)..... -65° to 1050°



- Double-ply construction aluminum coated fiberglass fabric hose with a heat-resistant fiberglass liner mechanically crimped in a continuous process
- Fabric is locked around a coated steel wire by a metal strip formed into a clip
- Metal strip acts as a wearstrip and offers outstanding external abrasion resistance
- Extremely flexible and compressible with good flex characteristics
- Fiberglass liner increases tensile strength for a longer life cycle
- Ideal for engine and dynamometer testing, reel, drop systems and paper mill drying applications



Flex-Lok® TCF



Size Range (In).....stock 4" to 18"
custom to 20"

Standard Length (Ft) 25'

Standard Colorsblack with a silver liner

Temperature Range (°F)..... -60° to 600°



- Double-ply construction Teflon® fabric hose with a heat-resistant fiberglass liner mechanically crimped in a continuous process
- Fabric is locked around a coated steel wire by a metal strip formed into a clip
- Metal strip acts as a wearstrip and offers outstanding external abrasion resistance
- Excellent fatigue resistance & good flex characteristics
- Sealed exterior prevents the escape of dangerous fumes
- Ideal for reel, drop systems and venting many of today's harsh chemicals
- Available with a non-marking TPR clip cover to protect the helix and the equipment that is attached to the hose



* Negative pressure fan system with ambient air inlet recommended to maximize effectiveness and life of duct.

Flex-Lok® 300



Size Range (In).....stock 4" to 18"
custom to 20"

Standard Length (Ft) 25'

Standard Colors black

Temperature Range (°F)..... -65° to 300°



- Single-ply neoprene coated polyester fabric hose mechanically crimped in a continuous process
- Fabric is locked around a coated steel wire by a metal strip formed into a clip
- Metal strip acts as a wearstrip and offers outstanding external abrasion resistance
- Extremely flexible and compressible
- Flame retardant to UL 94V-0
- Ideal for low temperature fume control applications
- Available with a non-marking thermoplastic rubber clip cover to protect the helix and the equipment that is attached to the hose (Flex-Lok® 300W)

New!



Flex-Lok® 570



Size Range (In).....stock 4" to 18"
custom to 20"

Standard Length (Ft) 25'

Standard Colorsgreen outer layer
black inner layer

Temperature Range (°F)..... -40° to 570°



- Single-ply Para-Aramid fabric hose mechanically crimped in a continuous process
- Fabric is locked around a coated steel wire by a metal strip formed into a clip
- Metal strip acts as a wearstrip and offers outstanding external abrasion resistance
- Excellent compressibility, puncture resistance and tensile strength
- Excellent fatigue resistance and good flex characteristics
- Ideal for medium temperature, high flex fume venting applications
- Available with a non-marking TPR clip cover to protect the helix and the equipment that is attached to the hose

New!



Flex-Lok® 750



Size Range (In).....stock 4" to 18"
custom to 20"

Standard Length (Ft) 25'

Standard Colors red with a silver liner

Temperature Range (°F)..... -40° to 750°



- Double-ply construction wire inserted fiberglass fabric hose with a heat-resistant fiberglass liner mechanically crimped in a continuous process
- Fabric is locked around a coated steel wire by a metal strip formed into a clip
- Metal strip acts as a wearstrip and offers outstanding external abrasion resistance
- Excellent heat stability
- Good flexibility, durability and flow characteristics
- Inserted wire fabric and fiberglass liner increases tensile strength for a longer life cycle
- Excellent for reel and drop systems
- Ideal for high temperature diesel exhaust applications

New!



Flex-Lok® 1200



Size Range (In).....stock 4" to 18"
custom to 20"

Standard Length (Ft) 25'

Standard Colorsred

Temperature Range (°F)..... -40° to 1200°



- Double-ply wire inserted fiberglass fabric hose mechanically crimped in a continuous process
- Fabric is locked around a coated steel wire by a metal strip formed into a clip
- Metal strip acts as a wearstrip and offers outstanding external abrasion resistance
- Extreme temperature resistance with excellent heat stability
- Good flexibility and flow characteristics
- Inserted wire fabric increases tensile strength for a longer life cycle
- Excellent for reel and drop systems
- Ideal for applications where extreme temperatures are a factor

New!



Bendway® A



Size Range (In).....stock 2" to 12"
 Standard Length (Ft)5', 10'
 Standard Colorssilver
 Temperature Range (°F).....-100° to 400°



- Single-ply helically corrugated aluminum alloy hose with a four-ply finished seam that is folded flat and crimped for tightness and strength
- Light weight and hand bendable allowing for elbows and turns to be formed easily during installation
- Self-supporting construction allows for bends to stay in place
- Resists metal fatigue, weathering and most corrosive fumes and chemicals
- Not recommended for continuous flexing
- Hose connectors available
- Wall thickness = .008"



Bendway® S



Size Range (In).....stock 2" to 12"
 Standard Length (Ft)5', 10'
 Standard Colorssilver
 Temperature Range (°F).....-400° to 800°



- Single-ply helically corrugated stainless steel alloy hose with a 4-ply finished seam that is folded flat and crimped for tightness and strength
- Light weight and hand bendable allowing for elbows and turns to be formed easily during installation
- Self-support construction allows for bends to stay in place
- Resists metal fatigue, weathering and most corrosive fumes and chemicals
- Not recommended for continuous flexing
- Hose connectors available
- Wall thickness = .005"



Bendway® Plus



Size Range (In).....stock 3" to 12"
 Standard Length (Ft)25' (3"-8"), 15' (9"-12")
 Standard Colorssilver
 Temperature Range (°F).....up to 1650°



- Manufactured using 316Ti Stainless Steel in a patented roll lock construction
- Durable corrugations allow product to be dragged, bent and reshaped numerous times without damage or breaking
- Suitable for fume and air exhaust applications with extremely high temperatures
- Very flexible
- Titanium stabilized 316 stainless alloy for superior high temperature corrosion resistance
- Suitable for chemical fume exhausting, high temperature and corrosive applications where both positive and negative pressures are involved
- 25' coils can ship via UPS in 3" to 4" diameters
- Wall thickness = .006"



FLEXAUST®

Bendway® Aluminum and Stainless Steel Shipping Information:

- Each length packed in individual tube. (Suggested to reship from your stock) Priced at list per foot with added net tube charge per length as stated.
- All Bendway® Aluminum and Stainless Steel must ship freight collect.
- Consult us for specific packaging and freight requirements.

Minimum Standard Box Quantities:

Size	Lengths Per Box	Feet Per Box
2"	100	1000
3"	48	480
4"	30	300
5"	16	160
6"	12	120
7"	9	90
8"	6	60
10"	4	40
12"	3	30

Flare-Lock®



Size Range (In).....stock 2" to 4"
Standard Length (Ft) 11'
Standard Colors black
Temperature Range (°F).....up to 375°

F

- Light weight rubber hose
- Resistant to heat, aging, gasoline, oil and fumes
- No wire or metal; even when flattened 100%, the hose immediately returns to its original shape
- Ideal for carbon monoxide exhaust applications, small cars and small trucks
- Flared end on each hose allows for connection to multiple lengths of the same size hose
- Easily spliced, connected and re-connected as needed



ACT



Size Range (In).....stock 5", 6"
Standard Length (Ft) 11'
Standard Colors black
Temperature Range (°F).....up to 375°

F

- Light weight wire-reinforced rubber hose
- Resistant to heat, aging, gasoline, oil and fumes
- Wire insert prevents kinking
- Ideal for carbon monoxide exhaust applications, diesel and gasoline trucks



Dyno Hose



Size Range (In)..... stock 4"
Standard Length (Ft) 11'
Standard Colors gray
Temperature Range (°F).....up to 450°

F

- Special rubber blend to withstand the high temperature of a dynamometer when used with a fan assisted system
- Heavy wall thickness increases durability
- Designed to be used in IM240 and VMAS emission testing



FLEXAUST®

ACCESSORIES

Garage Exhaust Accessories



Aluminum
Door Port



Aluminum
Pulley Elbow



Aluminum
Splice
Connector



Aluminum Y
Connector



Tail Pipe
Adapter



Rubber Door
Port

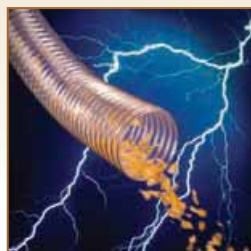


Twin Oval
Adapter



Rubber Y
Connector

MARKET	APPLICATION	PRODUCTS
Agricultural	Seeder Hoses, Cotton, Tobacco	Flx-Thane MD, Flx-Thane HD, Commercial, Flx-Thane VHD, Mark 2
Air Duct Cleaning	Duct Cleaning	R-2 Clear, ADC, CWC-W, Commercial, FSP-2
Aircraft	Ground Support Duct	CWGS, GS, Flex-Lok 1050, Flex-Lok 600, SD-W, AWP-W
Automotive	A/C Units, Defroster Duct	CW-325, GS, NS, Flex-Lok 550, Flex-Lok 1050
Brake Ducting	Brake Cooling	BDS, GS, GN, Raceflex
Bridge Cleaning Filtering	Dust Control	Flx-Thane MD, Flx-Thane HD, CWC-W, FSP Bridge
Car Wash	Dryer Duct, Vacuum Hose	T-7W, CWGP, Commercial, Flx Plus, DPZ
Carpet Cleaning	Vacuum Hose	Commercial, STM
Chemical Plants	Fume Control	Flex-Lok HP, Flex-Lok 1050, Bendway Plus, T-7, Flex-Lok TCF
Clean Rooms	Ventilation	R-2 Clear, Flx-Thane SD, Mark 2, Flexstat CR, T-7 White
Concrete Transport	Dust Control	Flx-Thane MD, Flx-Thane HD, Flx-Thane VHD
Conduit	Cable Covers and Protectors	Uni-Loop, Commercial, Clutter Keeper
Cotton Picking	Harvesting, Vacuum	Flx-Thane MD, Flx-Thane HD, T-7SR, Flex-Tube PU
Defroster/Heater	Heat, Defroster Duct	XLT, GS, GN, DFD-T
Diesel/Engine Exhaust	High Temperature Exhaust	CW-325, GN, Flex-Lok 550, Flex-Lok 1050, Bendway Plus, Flex-Lok 600, Flex-Lok TCF, Flex-Lok 700, Flex-Lok 1200
Dry Cleaning	Fume Control	LT, CW-325, BDS, GS, FTE-T
Dust Collection	Dust Control	R-4, Flx-Thane LD, Flx-Thane MD, Flx-Thane SD, T-7, Flex-Tube EF
Exhaust Systems	Carbon Monoxide Removal	CW-325, Flex-Lok 550, Flex-Lok 1050, Flex-Lok 600, Flex-Lok 570, Flex-Lok TCF, Flex-Lok 750
Fireplace Inserts	High Temperature Exhaust	Bendway S, Bendway Plus
Foundries	Dust and Fume Control, Ventilation	GS, Flex-Vest, Flex-Lok 550, Flex-Lok 1050, Bendway Plus
Garage Exhaust	Fume Control, High Temperature Exhaust	CW-325, GS, NS, Flex-Lok 550, Flex-Lok 600, Flex-Lok TCF, Flex-Lok 300
Humidity Control	Dehumidification, Humidity Control	FSP-5, SD-W, AWP-W
HVAC	A/C, Heat, Ventilation	Bendway S, Bendway Plus, FSP-5, Arctic Duct 3, Arctic Duct U, Flex-Lok PVG
Industrial Vacuum Cleaners	Vacuum Hose	MG-U, Commercial, DPZ-C, Flx Plus, FlexStat, Flex-Tube
Insulation Blowing	Insulation Blowing & Removal	Mark 2, Flx Plus, Flx-Thane LD, E-2
Landscaping	Mulch Blowing	Flex-Tube PU
Lav Waste Disposal	Lav Disposal	Flx-Thane MD, FSP-2, Flex-Tube PU
Lawn and Leaf Collection	Grass and Leaf Collection	HT-W, Flx-Thane HD, Flx-Thane VHD, Flex-Tube PU, Flex-Tube PV, LCDC
Marine Sanitation	A/C, Bilge Pumping and Ventilation, Heat	Commercial, STM, Tiger Tail, FTE-T
Mining	Ventilation	CWGP, FSP-5, SD-W, AWP-W
Paint Spray Extraction	Fume Control, Ventilation	T-7, Flx-Thane LD, Flx-Thane MD, Flx-Thane SD, FSP-1
Paper Mills	Drying, Fume and Moisture Control	CW-325, GS, Flex-Lok 1050, Flx-Thane HD, Flx-Thane VHD, Flex-Lok 750, Flex-Lok 1200
Peat Moss Vacuum	Vacuum Hose	HT, Flx-Thane MD, Flx-Thane HD, Flex-Tube PU
Pet Grooming Equipment	Vacuum Hose	MG-V, Uni-Loop, Commercial, Flx Plus, R-2, XLT, DPZ
Pharmaceutical	Fume Ventilation	R-2 Clear, R-3 Clear, Flx-Thane LD, White, Flex-Tube PV, FlexStat CR, T-7 White
Plastic Pellet Transfer	Pellet Conveying	Flx-Thane HD, FlexStat, FlexStat CR
Pollution Control	Dust and Fume Control	R-2 Blue, T-7, CW-325, Flex-Lok 550, Pliaduct, Flex-Tube EF
Powder Processing	Static Build-Up	FlexStat, FlexStat CR, FlexStat 60, Flx-Thane SD
Pumper	Water and Waste Discharge	Commercial, STM, Tiger Tail
R.V. Manufacturing	A/C and Defroster Duct, Lav Disposal	R-2 Blue, T-7, DFD-T, Uni-Loop, Saniflex
Racecar Helmet Ventilation	Fresh Air Intake	MG-V, LT, DFD-T
Residential Vacuum Cleaners	Vacuum Hose	Uni-Loop, Commercial, ULT, MG-V
Sand Blasting	Dust Control	Flx-Thane MD, Flx-Thane HD, Flx-Thane SD, CWC-W, FSP Bridge
Sand and Gravel Suction	Dust Control, Vacuum Hose	R-3 Blue, R-3 Clear, HT, Flx-Thane HD, Flex-Tube 60
Sewer and Waste	Water and Waste Discharge	Commercial, STM, Tiger Tail, Tiger Tail Sewer Guide
Sheet Metal	Dust and Fume Control	T-7, Flx-Thane LD, Flx-Thane MD, CWGP, FSP-2
Shipyards	Air and Fume Control, Dehumidification	R-3 Blue, CWGP, CWS, FSP-2, Flx-Thane SE, Flex-Tube PP-FR
Street and Parking Lot Sweepers	Vacuum Hose	HT, Flx-Thane MD, Flx-Thane HD, CWY, Flx-Thane VHD
Suction	Water and Waste Discharge	R-3 Clear, Flx-Thane MD, Commercial, Tiger Tail
Textile Fiber Collection	Dust and Lint Control	R-2 Blue, XLT, Flx-Thane LD, FSP-1, Flex-Tube TR
Vapor Recovery	Fume Control	Flx-Thane LD, Flx-Thane MD, MG-U
Vehicle Exhaust Systems	Exhaust, Fume Control	CW-325, GS, NS, Flex-Lok 550, CW 325-W, Flex-Lok 600, Flex-Lok 750, Flex-Lok TCF, Flex-Lok 1200
Welding Fume Extraction	Fume Exhaust	R-2 Blue, FSP-1, CW-325, Flex-Lok 550, Flex-Lok 1050, Flx-Thane SE, CW 325-W, Flex-Lok 570, Flex-Lok 300
Woodworking/Furniture Industries	Dust and Chip Control	R-4, Flx-Thane LD, Flx-Thane MD, Flx-Thane HD, Flx-Thane SD, FlexStat, Flex-Tube PV



Flexaust® manufactures a wide variety of flexible hose products from many unique materials to provide you with a great selection from which to choose. As we mentioned in the Flexaust® Product Selection Guide - vacuum, temperature and pressure play a big part in choosing the best product for your application. These engineering tables will help guide you in your selection according to the application requirements.

Please visit www.flexaust.com for more specifics and printable technical data sheets for each individual product, highlighting temperature ranges, as well as, vacuum and pressure ratings. The Flexaust® Sales Team is ready to help “guide” you in making the best selection for your application.

PRESSURE EQUIVALENTS:

- 1 psi = 27.7 inches w.g.
- 1 psi = 2.04 inches of mercury (Hg)
- 1 inch of mercury (Hg) = 13.6 inches w.g.
- 1 inch of mercury (Hg) = 0.491 psi

TEMPERATURE CONVERSION:

- $^{\circ}\text{F} = (^{\circ}\text{C} \times 1.8) + 32$
- $^{\circ}\text{C} = 0.555 (^{\circ}\text{F} - 32)$

All data is based on average approximation.

Inch/Metric Size Conversion Table

Inches	cm	mm
1.00	2.5	25.4
1.25	3.2	31.8
1.50	3.8	38.1
2.00	5.1	50.8
2.36	6.0	60.0
2.50	6.4	63.5
2.95	7.5	75.0
3.00	7.6	76.2
3.94	10.0	100.0
4.00	10.2	101.6
4.72	12.0	120.0
5.00	12.7	127.0
6.00	15.2	152.4
6.30	16.0	160.0
7.00	17.8	177.8
7.09	18.0	180.0
8.00	20.3	203.2
10.00	25.4	254.0
12.00	30.5	304.8
14.00	35.6	355.6
16.00	40.6	406.4
18.00	45.7	457.2

Temperature Conversion Table

$^{\circ}\text{F}$	$^{\circ}\text{C}$
-65	-53.9
-40	-40.0
-20	-28.9
0	-17.8
20	-6.7
32	0.0
40	4.4
60	15.6
80	26.7
100	37.8
125	51.7
150	65.6
175	79.4
200	93.3
212	100.0
225	107.2
250	121.1
300	148.9
325	162.8
350	176.7
400	204.4
450	232.2
500	260.0
550	287.8



1510 Armstrong Road
Warsaw, IN 46580
Tel: 574-267-7909
Fax: 574-269-7491
sales@flexaust.com
www.flexaust.com

4584 Calimesa Street
Las Vegas, NV 89115

10 Industrial Way
Amesbury, MA 01913

12134 Esther Lama, Suite 300
El Paso, TX 79936

5537 Armour Drive
Houston, TX 77020

5250 Fulton Industrial Blvd.
Atlanta, GA 30336

Find Us On:



Distributed By: _____

